



Chaperon 2004/06
Remote Management Installation

1. Requirements
2. ISA Management MMC Installation
3. Chaperon Control Panel Installation

1. Requirements

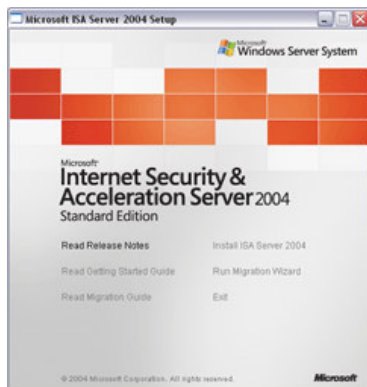
- Microsoft Internet Security and Acceleration Server 2004 or 2006 Installation CD with valid key
- Latest Chaperon 2004/06 installation set

2. ISA Management MMC Installation

In order for the Chaperon Control Panel to function properly remotely, the ISA Management MMC must be installed and connected to the ISA server. The following instructions outline the steps that are to be taken in order to do so.

Note: These steps are assuming that the operating system being installed to is a non-server OS such as Windows XP or Windows 2000. If installing on a server OS such as Windows 2000 Server or Windows 2003 Server, a custom ISA Server install must be completed that installs only the ISA Server Management. Refer to ISA Server documentation for assistance in doing so.

*Screenshots provided are screenshots from an ISA 2004 installation. ISA 2006 installation screens may vary slightly.



Insert the ISA Installation CD into the drive. The setup window should automatically appear. Click the “Install ISA Server 200X” link to begin.

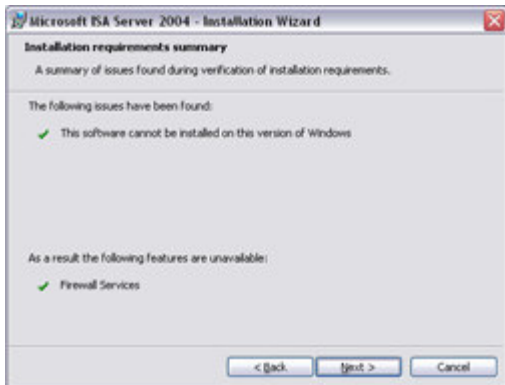
The Installation wizard will now start. Click Next to continue.





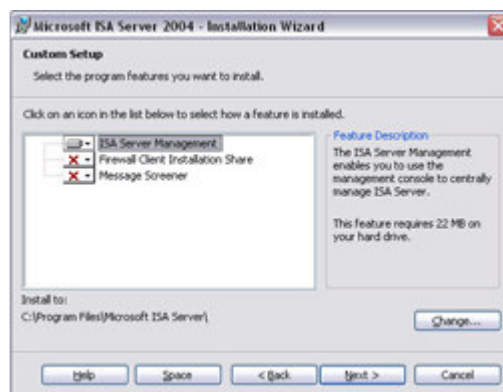
After reading and accepting the License agreement provided by Microsoft, check the box stating that you accept the terms and click Next.

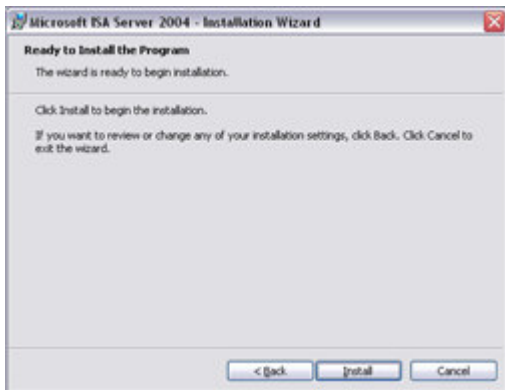
Enter a user name and organization name, followed by entering a valid ISA Server Registration key. Click Next.



The Installation will detect that the OS will not support the Firewall services. The ISA Management will still be installed. Click Next to continue.

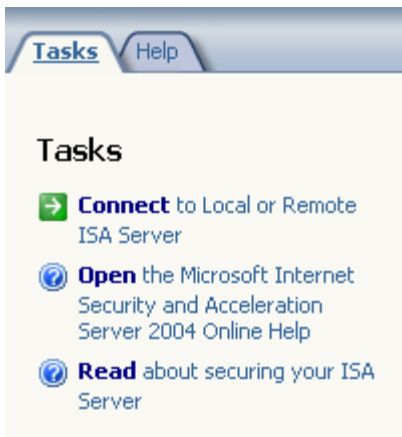
If the install path needs to be changed, click the Change button and select a new installation path. Otherwise click next to accept the defaults.





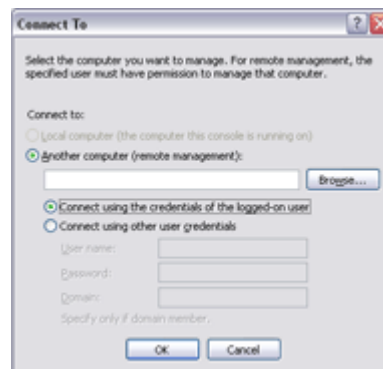
The wizard has now gathered enough information to complete the installation. Click the Install button to begin the installation.

Installation is now complete. Check the box to Invoke the ISA Server Management and click Finish.



ISA Management should now open. In the right pane, click the Connect link.

In the “Another computer” section, enter the name of the ISA Server you wish to connect to. If the account you are currently logged in as has permission to manage the server, click OK to use that account, otherwise click the “Connect using other user credentials” button and enter valid credentials to connect to the server. If the connection fails, ensure your credentials are correct and try again. Refer to ISA Server documentation for additional information.



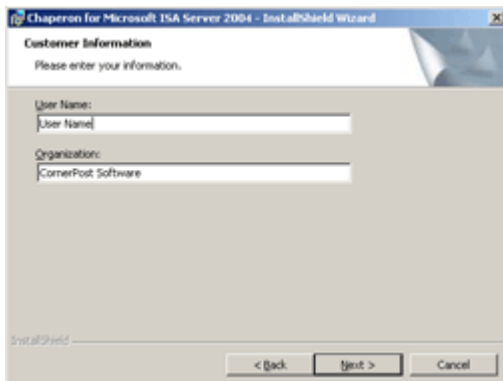
Once a successful connection is made to the ISA server, the ISA Administration should function as if you are on the ISA server itself. The Chaperon Control Panel can now be installed which is outlined in the following section.

3. Chaperon Control Panel Installation



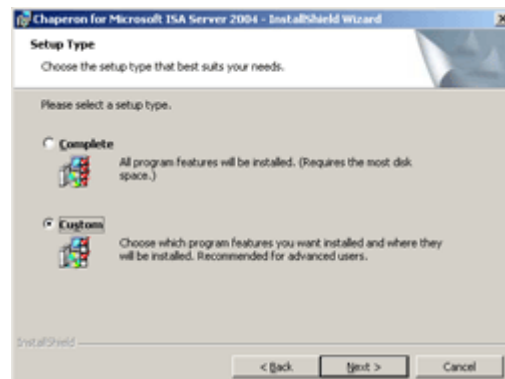
Run the Chaperon 2004/06 Installation. Click Next to begin the Installation wizard.

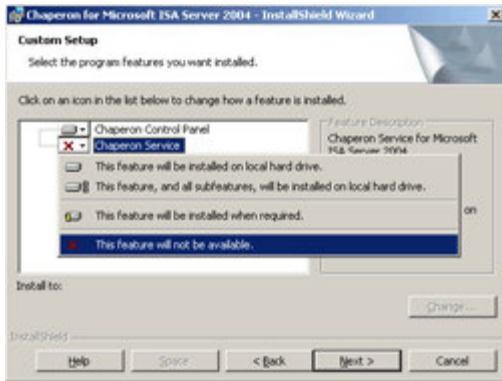
After reading and accepting the License agreement, check the box stating that you accept the terms and click Next.



Enter a user name and organization name and click Next.

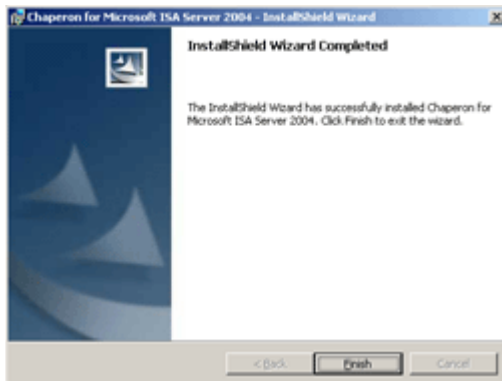
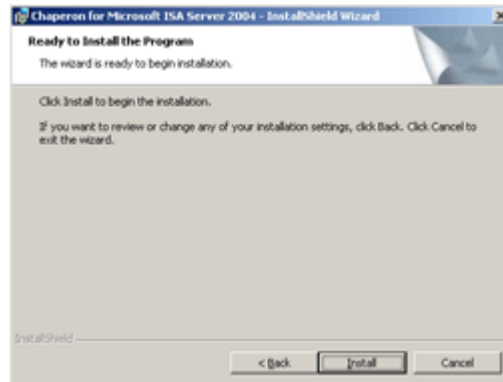
Select Custom as the setup type and click Next.





Click the “Chaperon Service” item and select “This feature will not be available”. “Chaperon Control Panel” is all that should be included for installation. If the install path needs to be edited, click the change button and select a new install path, otherwise click Next to continue.

The wizard is complete and ready to install, click Install to begin the installation.



Once installation is complete, click Finish to exit the installer.

Open the Chaperon Control Panel. The “Connect to ISA Server” window should open. Enter the same credentials that were used to connect using the ISA Management MMC. **If a domain is specified in the “Log on To” section, ensure that it is in all caps.** If the connection is successful, the Chaperon Control Panel will open as it would appear on the server itself. Some functions are not available remotely such as full filter downloads. If the connection fails, ensure that your credentials were entered correctly.



Microsoft, Active Directory, ISA Server, Internet Security and Acceleration Server, Windows, XP, 2000 Server, and 2003 Server are either registered trademarks or trademarks of Microsoft Corporation in the United States and/or other Countries.