



Chaperon 2004/06
Installation for ISA 2004/06 Standard Edition

1. Minimum System Requirements for Chaperon
2. ISA Post Install, Chaperon Pre Install Checklist
3. Chaperon Installation
4. Important Post Chaperon Installation Information

1. Minimum System Requirements for Chaperon*

- Microsoft Windows Server 2000 or 2003.
- Microsoft Internet Security and Acceleration Server 2004 or 2006 Standard Edition.
 - **Note:** Chaperon must only be installed after ISA Server has been installed.
- 1.5GHz or higher CPU.
- 1.0GB of RAM.
- 450MB free hard disk space for setup file and installation.

*Actual system requirements will vary based on your deployment configuration and expected load.

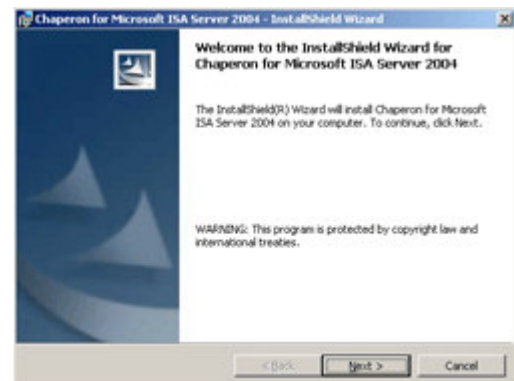
2. ISA Post Install, Chaperon Pre Install Checklist

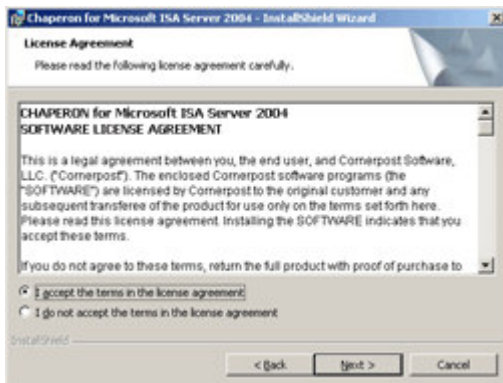
- Ensure that Internet access is available from the ISA Server.
- When using two NICs (highly recommended), only the external NIC should have a default gateway set.
- The Internal Network set configured in ISA during the initial install should only include address ranges that are present on your internal network. This can be checked and edited in the ISA management MMC under "Configuration > Networks > Networks (tab) > Internal".
- If you intend to use Chaperon's email notifications (recommended), the ISA server must have access to a mail server. An ISA rule that allows the "localhost" network to access the mail server or to access a network the mail server resides on will be needed.
 - a. To quickly test mail server connectivity, open a command prompt by clicking "Start > Run" and typing "cmd".
 - b. At the command prompt type "telnet mailserver 25" (without quotes and replacing "mailserver" with the IP or name of your mail server).
 - c. If the connection is successful you should receive a message from the mail server. If the connection fails, the Firewall policy does not currently allow SMTP access to the mail server, the mail server information is incorrect, or there is a problem with the mail server itself.

3. Chaperon Installation

Download the Chaperon Installation onto your ISA server and double-click it to begin.

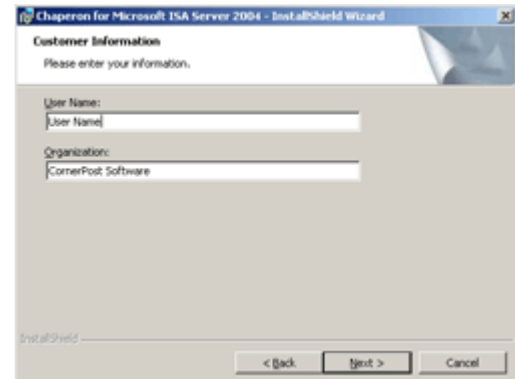
Click Next to proceed with the Installation.





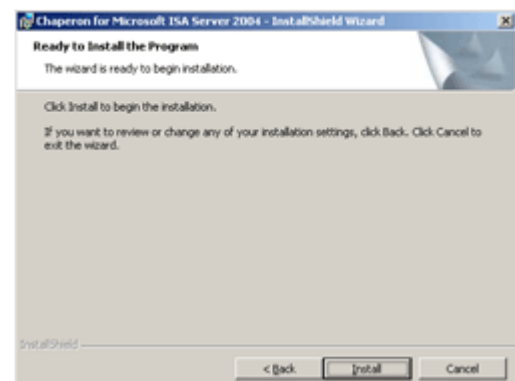
After reading the license agreement, if you accept, check the box stating that you accept the terms within the license agreement and click Next.

Enter a user name and organization name, and click Next.



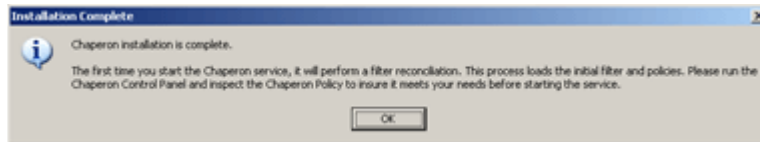
Choose to perform a complete setup and click Next.

Setup is now ready to begin. Click Install to begin the installation.



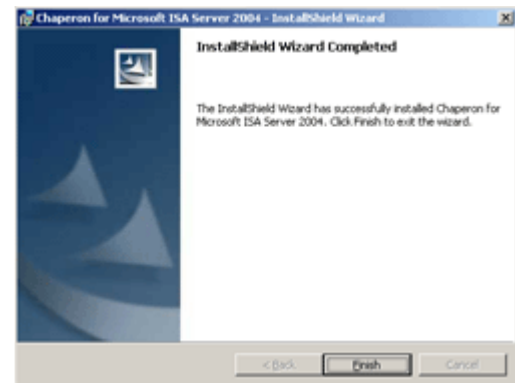
Setup will prepare Chaperon to function with the ISA server during the initialization process. **This process can take several minutes to complete and should not be interrupted.**

Chaperon will now prompt to download the full filter. Click Yes to begin the download. If the download fails, ensure that the ISA server has a rule that allows the “localhost” network http access to the “external” network and that any upstream firewalls allow outbound http.



Chaperon installation is now complete. Click OK.

Click Finish to exit the installer. To avoid any problems, please [read the Post Chaperon Installation Information before starting the Chaperon service or rebooting the server.](#)



4. Important Post Chaperon Installation Information

- The Chaperon service is set to start automatically at boot, but will not be started when installation is complete.
- When the Chaperon service is started for the very first time, it begins performing its initial filter load that creates the filtering objects and policy rules in the ISA server.
- The initial filter load is only needed once, and can take hours depending on the speed of the Machine. On average, a machine with a 2.4Ghz CPU and 1 GB of RAM will take around 1.5 hours to complete the filter load.
- There will be no filtering in any way until the initial filter load is completed.
- **It's extremely important that the load process not be interrupted in any way** by making changes to Chaperon or ISA, OR by rebooting the server. If the process is interrupted, the filter load may have to be restarted from the beginning, or at worst, **it could cause issues requiring reinstallation of both ISA and Chaperon.** Start the Chaperon service only when the server will have a few hours to run uninterrupted. Keep in mind that since the service is set to Automatic that **Chaperon will start if the server is rebooted.**
- Once the load completes, Chaperon will have a basic filtering policy in place that will filter all users. During the filter load, the “Rules Engine” section on the Chaperon Control Panel will state “Active – Reconcile”. Once the load has completed, the “Rules Engine” section will state “Idle”.
- When the initial filter load is complete, the remaining configuration of Chaperon can be completed. Refer to the Chaperon configuration manual located at http://download.cornerpost.net/ci/pdf/Chaperon2K4_6_Config.pdf , or open Help > Chaperon Help” in the Chaperon Control Panel for configuration information.

Activity Monitor	Active - Monitoring
Last Monitor Event	3/6/2006 10:55:45 AM
Rules Engine	Idle
Last Filter Update	3/6/2006 6:24:21 AM
Next Filter Update	<not scheduled>
Queued Operation	<none>

Microsoft, Active Directory, ISA Server, Internet Security and Acceleration Server, and Windows are either registered trademarks or trademarks of Microsoft Corporation in the United States and/or other Countries.